



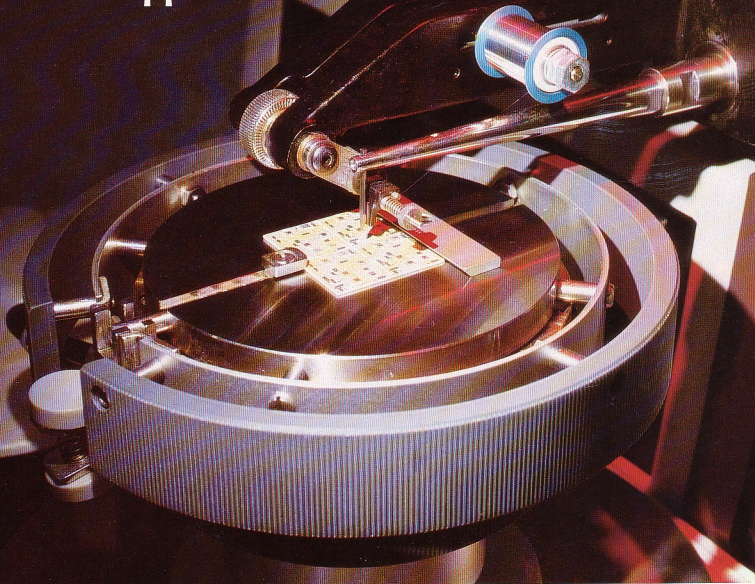
KULICKE and SOFFA
Industries, Inc.



Tel: + 44 (0) 1323 848338
Fax: + 44 (0) 1323 842223
e-mail: imps@imps.co.uk

Unit 4, Apex Business Park,
Diplocks Way, Hailsham,
East Sussex BN27 3JU

**For microwave, hybrid,
or IC applications**



Model 4123 Universal Wedge Bonder

for use with aluminum, gold or ribbon wire

- dc servo/LVDT-controlled bonding head
- built in, phase-locked loop U/S generator, with high Q transducer
- front panel electronic setting of bonding parameters
- optional chessman/manual Z dual operating modes
- individual 1st and 2nd bond forces
- optional spotlight targeting
- stitch bonding
- optional 3rd Channel Kit

The Model 4123 is an aluminum or gold wire wedge bonder that is versatile enough to bond simple ICs and discrete devices, or complex hybrids with height variations up to 200 mils.

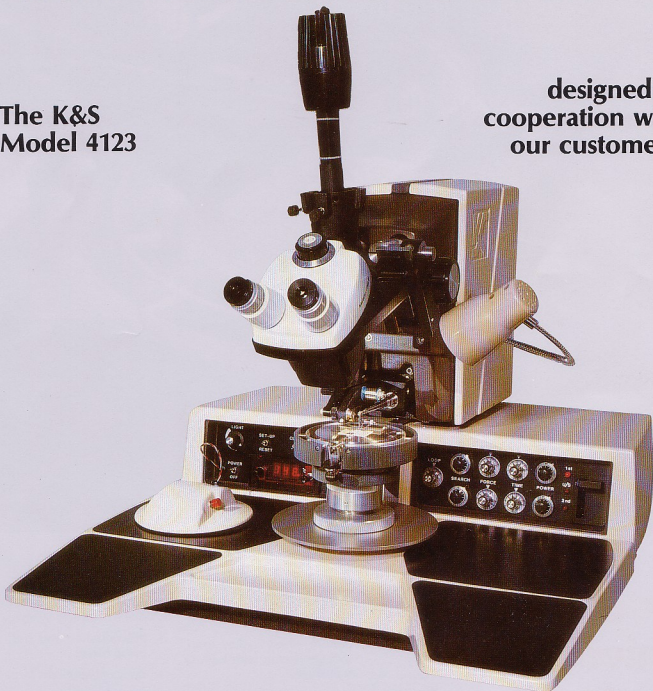
Extremely accurate loop and force control, individual bond forces and a wide range of wire sizes make it ideal for telecommunications and microwave applications where wire diameters are critical.

An optional feature that provides great flexibility is a 2-in-1 operating mode that allows either machine-controlled bonding using the chessman positioner, or complete manual Z control for hybrid height variations.

- Bonding head - 30° and 45° standard.
- Linear Variable Differential Transformer (LVDT)/dc servo-controlled displacement system provides maximum repeatability.
- Freely-rotating table moves through 360° without restriction.
- Controlled-impact bonding head minimizes vibration and produces higher-quality bonds.
- Stitch bonding capability enables operator to make several consecutive 2nd bonds very quickly.
- Built-in, phase-locked loop ultrasonic generator, with high Q transducer provides for a more efficient transfer of ultrasonic energy.
- Other features include clamp opener, 60° bonding head (optional) and illumination light dimmer.

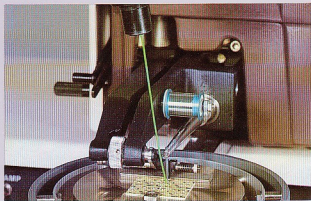
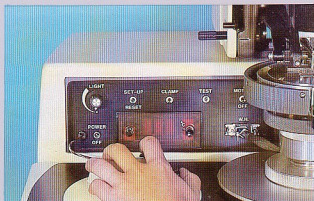
The K&S Model 4123

**designed in
cooperation with
our customers.**



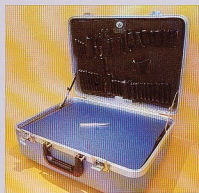
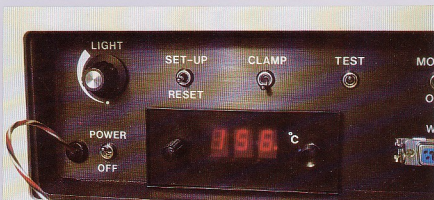
Dual operation mode allows either chessman or manual Z control (optional) for precise bond placement and more flexibility in multiple-bonding-height devices.

Spotlight option ensures precise bond targeting, reduces operator fatigue. Light is positioned at the target area. Machine automatically bonds at center of light spot.



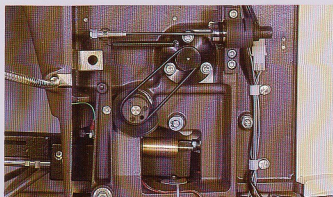
Accessories and options let you custom-tailor the Model 4123 to your application.

Digital temperature control option for heated workholders provides for precise setting and control of workholder temperature. Cold-junction reference compensation, body temperature differences correction (zero offset), graduated approach to set-point level (proportional band).



Quick changeover from one type of device to another - no special tools required.

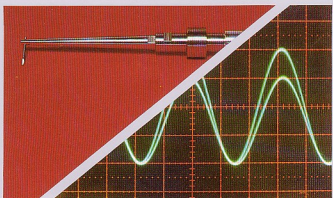
LVDT/DC servo closed-loop control of bonding head for smooth precise operation. Electronically controlled dual bond forces.



Fine individual control of wire feed and wire tear ensures uniform tail separation for variable wire diameters and elongations.



Complete electromechanical and electronic control of all parameters ensures high-quality, consistent results... regardless of wire diameter, package design, or complexity.



Built-in ultrasonic generator with phase-locked-loop and high-Q transducer for close frequency tracking and optimum bonding efficiency.



Individual dial setting of 5 parameters for 1st bond and 2 bond : bonding time, bonding power, bonding force, search height, and loop height.

Model 4123 Specifications

Wire

diameter range	
gold	0.5 to 3.0 mil (12-75 micron)
aluminum	1.0 to 3.0 mil (25-75 micron)
spool size	TC-1 0.5" (12.7 mm) diameter

Performance specifications

cycle time	.850 msec (includes 100 ms bond time)
bond force	.10 to 160 grams
bond time	.10 to 100 ms
ultrasonic power (max)	
low	1.3 W
high	2.0 W

Machine specifications

throat depth	5.5" (140 mm)
wire trajectory	30°/45° standard 60° optional
reset-to-overtravel	.200 mil (5.1 mm)
search/loop	0.015" (0.38 mm) under reset to
height range	0.015" (0.38 mm) above overtravel

table motion

gross	6.5" (165 mm) diameter
fine	0.5" (12.7 mm) diameter
bonding area	3.75" x 3.75" (95 mm x 95 mm)
chessman ratio	.6:1
tail length	adjustable
optics	B&L or Wild stereo zoom microscope, top mounted

Options

spotlight targeting
rotatable heated workholder
2" spool holder
all standard K&S cold manual workholders
digital temperature controller
manual Z system
3rd channel kit

Electrical requirements

100/120/220/240 V±10%, 50/60 Hz, 70 VA max.

Physical dimensions

26" (660 mm) H x 23.5" (597 mm) W
x 26" (660 mm) D

Weight (without accessories)

shipping110 lb (50 kg)
net64 lb (29 kg)

Specifications subject to change without notice.

Regional Sales Offices & Sales/Service/Locations

CORPORATE HEADQUARTERS

2101 Blair Mill Rd.
Willow Grove, PA 19090, USA
(215)784-6000 phone
(215)659-7588 fax

USA/AMERICAS

US Eastern Regional Office
2101 Blair Mill Rd
Willow Grove, PA 19090, USA
(215)784-6788 phone
(215)784-6181 fax
Florida • Indiana • Massachusetts •
Minnesota • New Hampshire • Texas

US Western Regional Office

2210 Martin Ave.
Santa Clara, CA 95050
(408)727-5040 phone
(408)727-4929 fax
Arizona • Southern California

EUROPE

Kulicke & Soffa AG
Blegistrasse 13
CH-6340 Baar, Switzerland
(41)42-327474 phone
(41)42-321188 fax
France • Germany • Israel • Italy •
Netherlands • Sweden • UK

ASIA

Hong Kong Regional Office
Kulicke & Soffa (Asia) Ltd
9th Floor, Fook Cheong Bldg
63 Hoi Yuen Road
Kwun Tong, Kowloon
Hong Kong
(852)3-896323 phone
(852)3-419909 fax
China • Korea • Philippines • Taiwan

Singapore Regional Office

Kulicke & Soffa (Asia) Ltd
#01-04-B Inchoape House
450/452 Alexandra Rd.
Singapore 0511
(65)4741598 phone
(65)4741597 fax
Australia • India • Malaysia •
Thailand

JAPAN

Kulicke & Soffa (Japan) Ltd
Sale Office and Technology Center
No. 5 Koike Bldg, 3F
1-3-12 Kita-Shinagawa
Shinagawa-Ku, Tokyo 140, Japan
Sales Office
(81)3-5461-1520 phone
(81)3-5461-1597 fax

Technology Center

(81)3-3450-7601 phone
(81)3-3450-7607 fax
Kyushu

TECHNOLOGY CENTERS

Willow Grove, PA, USA
Haifa, Israel
Tokyo, Japan

MANUFACTURING

Willow Grove, PA, USA
Haifa, Israel

Other specifications required by customer are possible.
All specifications subject to change without notice.

4123 Universal Wedge Bonder B993